

INTERIOR DESIGN

Copyright

2009-2011 by the author of this book, Nguyen T. Bui. All rights reserved. The author retains sole copyright to his contributions to this book. All images, found herein are the sole property of Nguyen T. Bui. No portion of this book and/or pdf may be reproduced, downloaded, photocopied or otherwise without the written permission from the author.

All rights reserved 2009, 2010, and 2011.



ASID Student Competition Entry

Luxury Stadium Suite

San Francisco, California

“The pendulum; it is an icon to all forms of music; it is the rhythm; the movement we make. The pendulum crosses boundaries and tests the limits, that to me, is what my company represents.”

- Sean Baxter

Design Profile:

When Sean Baxter created Pendulous Records in 1988; he began with a wild hope and a simple dream of producing the nations rising alternative pop-rock artists cultivating a brand new age in music. Now, as a major record label, Pendulous represents over a thousand artists within the United States alone and continues to expand nationally and internationally.

With Pendulous Record’s up and coming twenty year anniversary, Sean Baxter acquired a luxury stadium suite located at the AT&T Park, in San Francisco, California. His desire was to create a space indicative of the modern age; it would have elements of his logo and his company throughout and utilize sustainable materials and practices. Mr. Baxter strongly expressed a desire for interaction; a space that harmonizes with the mood and ephemeral emotions.

Design Concept:

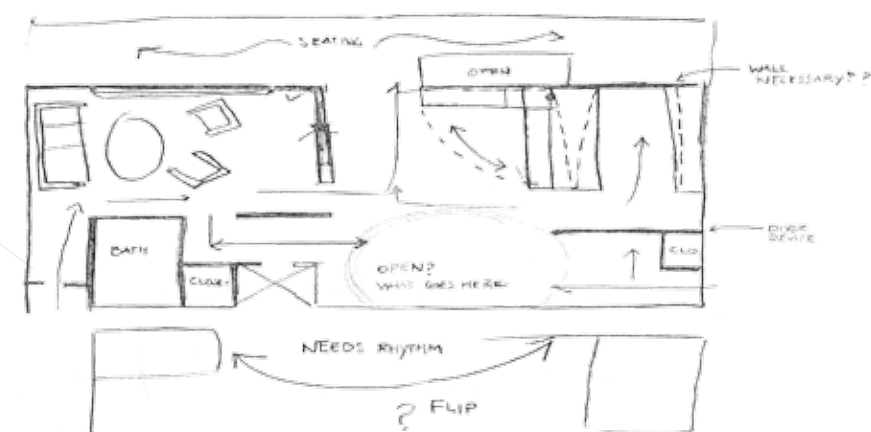
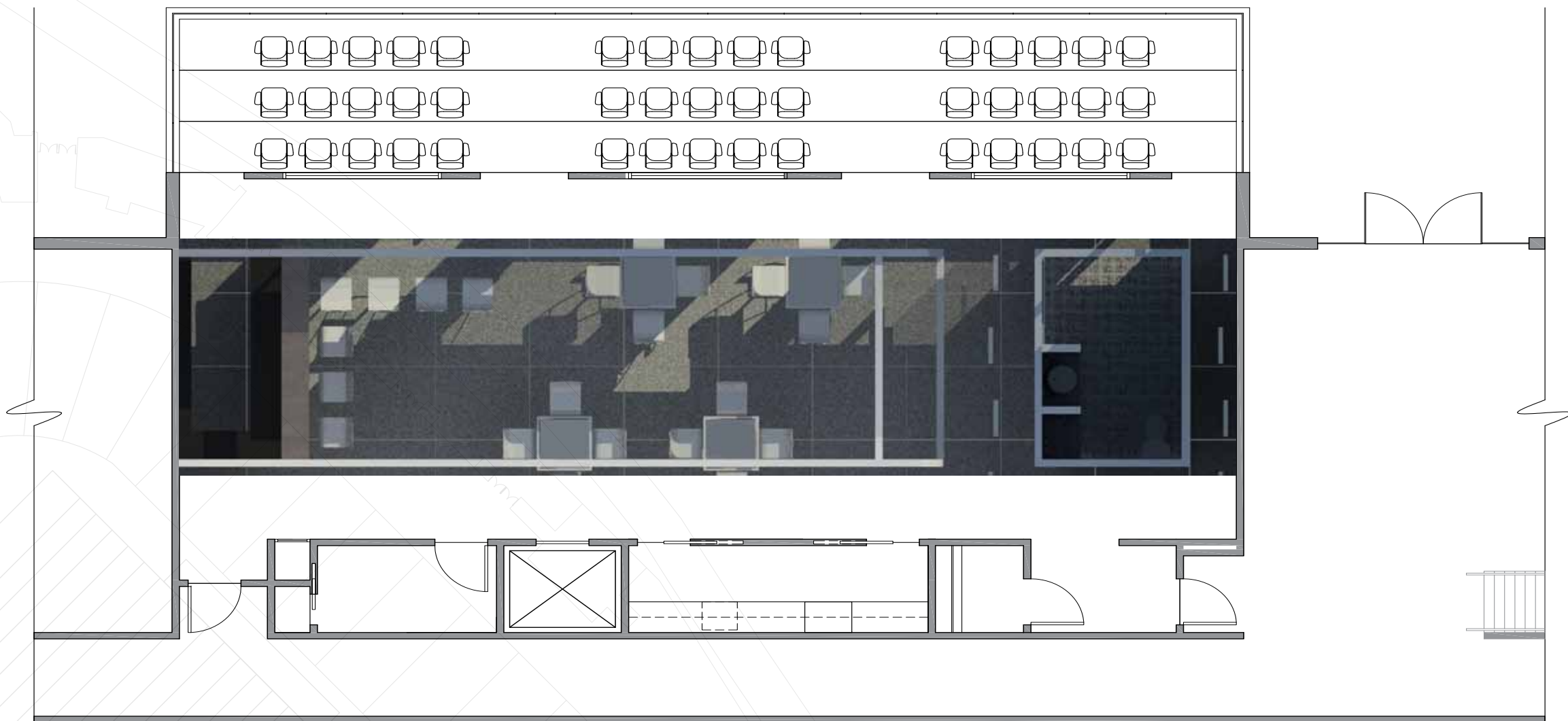
This suite shall unify technological advancement with sustainability representing what is here and now; and the potential. Light and color can be adapted to meet the needs of the moment resulting in multifaceted possibilities. Rigid line will delineate space, while tactile form and texture will be repeated to create a steady rhythm throughout.



Pendulous

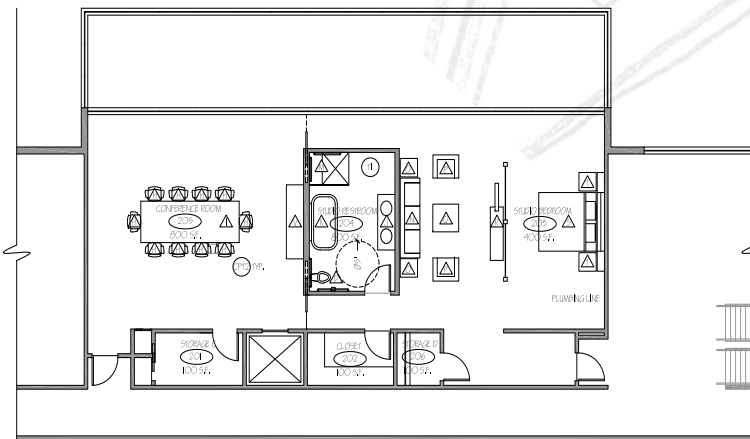
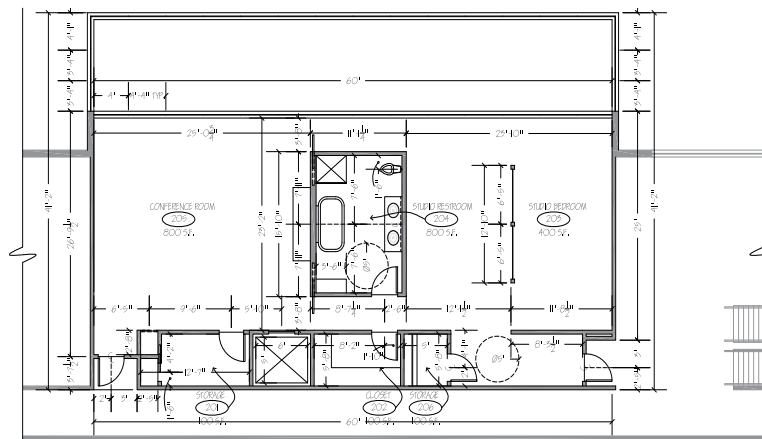
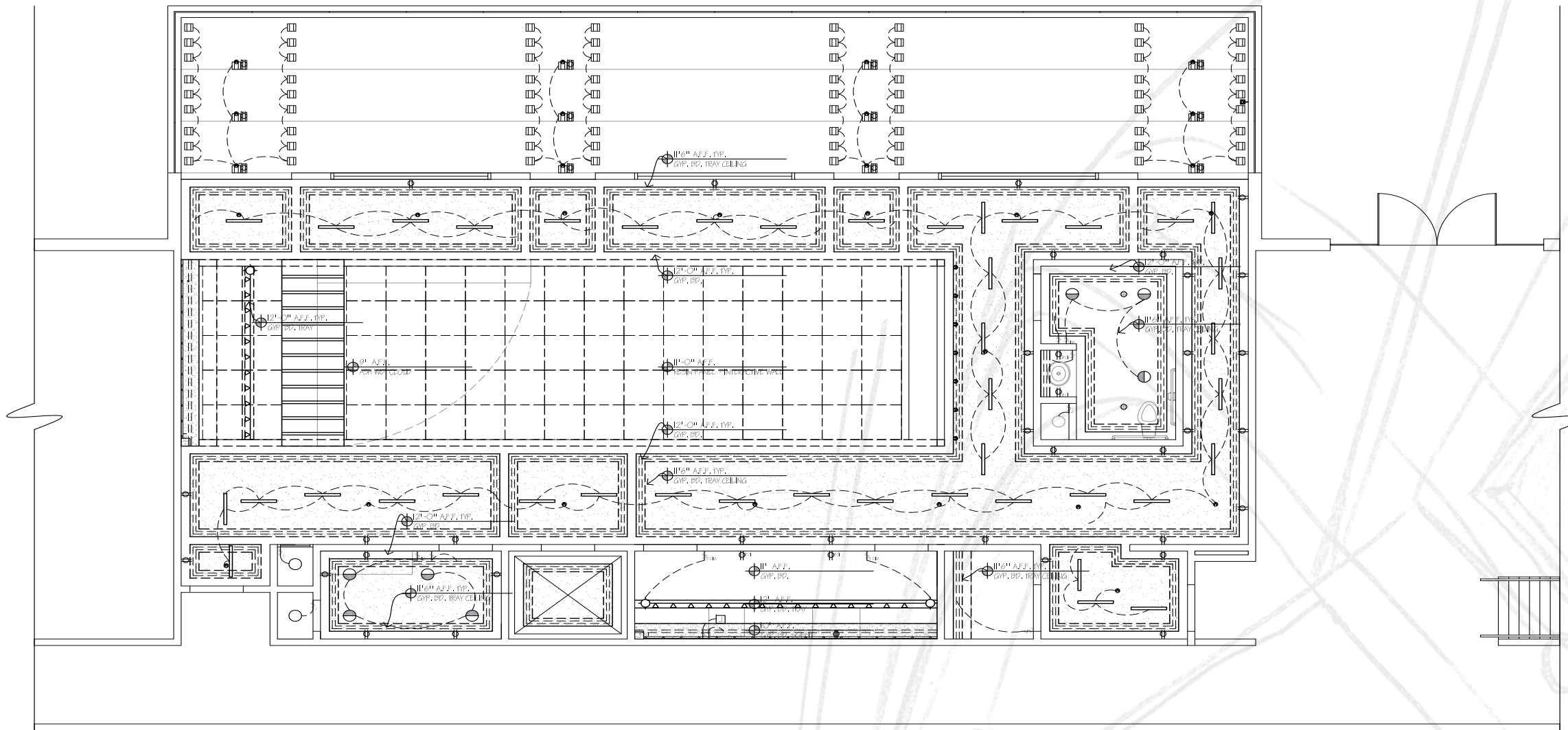


LOUNGE AREA - PERSPECTIVE



FIRST FLOOR - RENDERED FLOOR PLAN

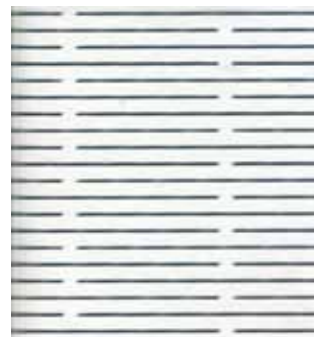
- Branding Material - Business Card Mock-up

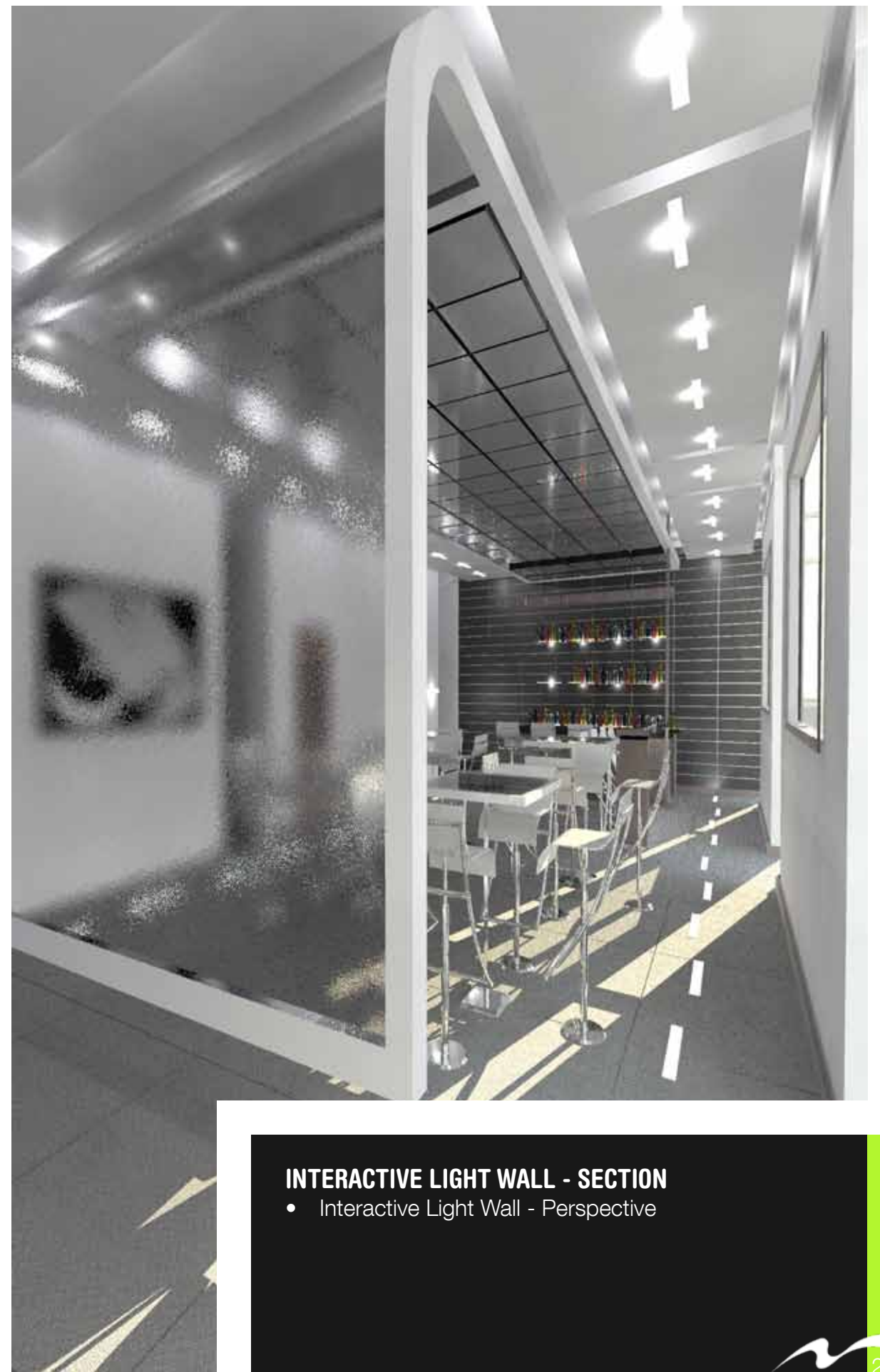
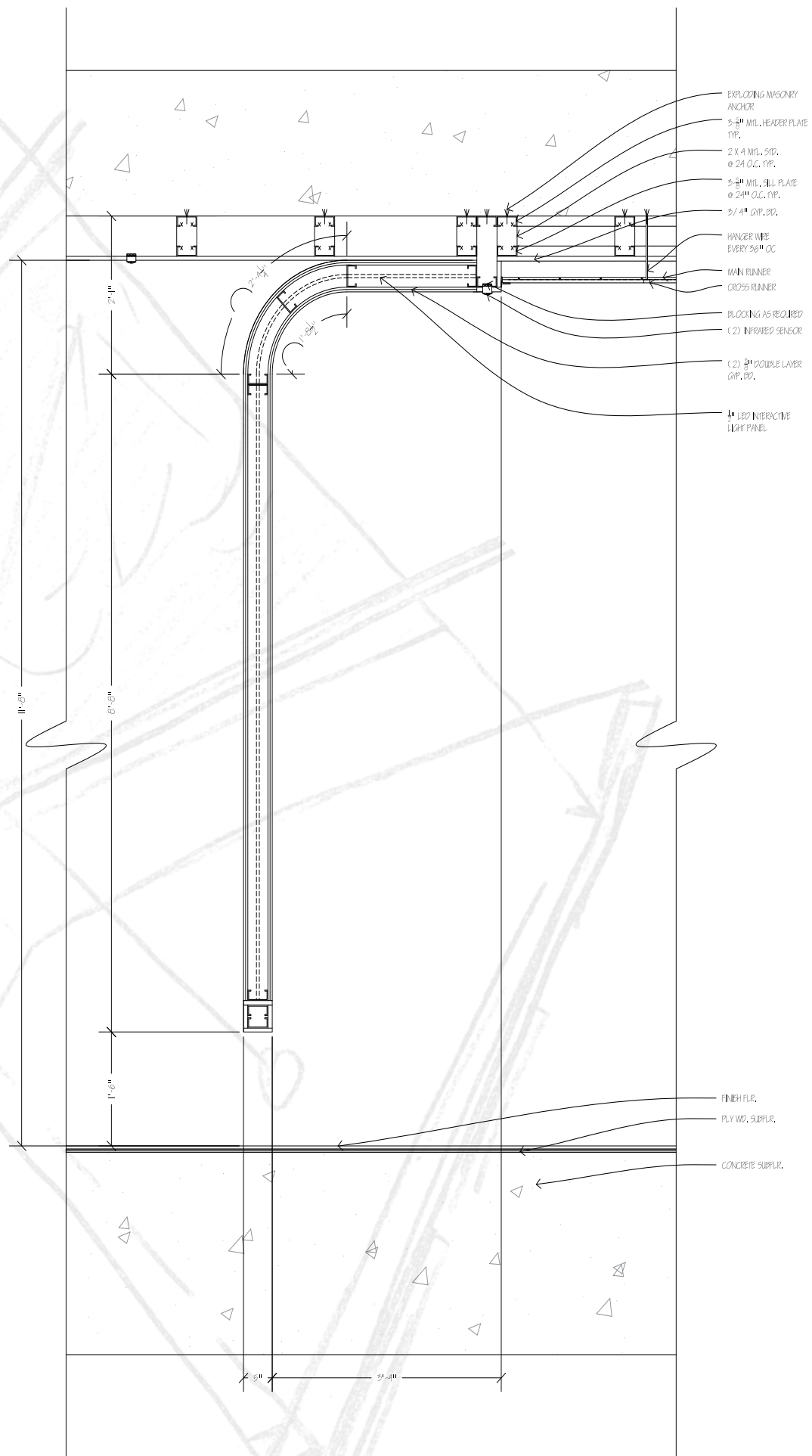


ELECTRICAL KEY			
	JUNCTION BOX		DIMMING SWITCH
	DUPLEX GFCI OUTLET		DIMMING THREE PRONG SWITCH
	DUPLEX OUTLET		OCCUPANCY SENSOR
	JUNCTION BOX		COVE ROPE LIGHTING
	EXTERIOR VENT		RECESSED EYEBALL CAN
	SINGLE SWITCH		RECESSED CAN
	THREE PRONG SWITCH		PENDANT LIGHT
	DOOR JAM SWITCH		INFLOOR PUCK LIGHT

FIRST FLOOR - REFLECTED CEILING PLAN

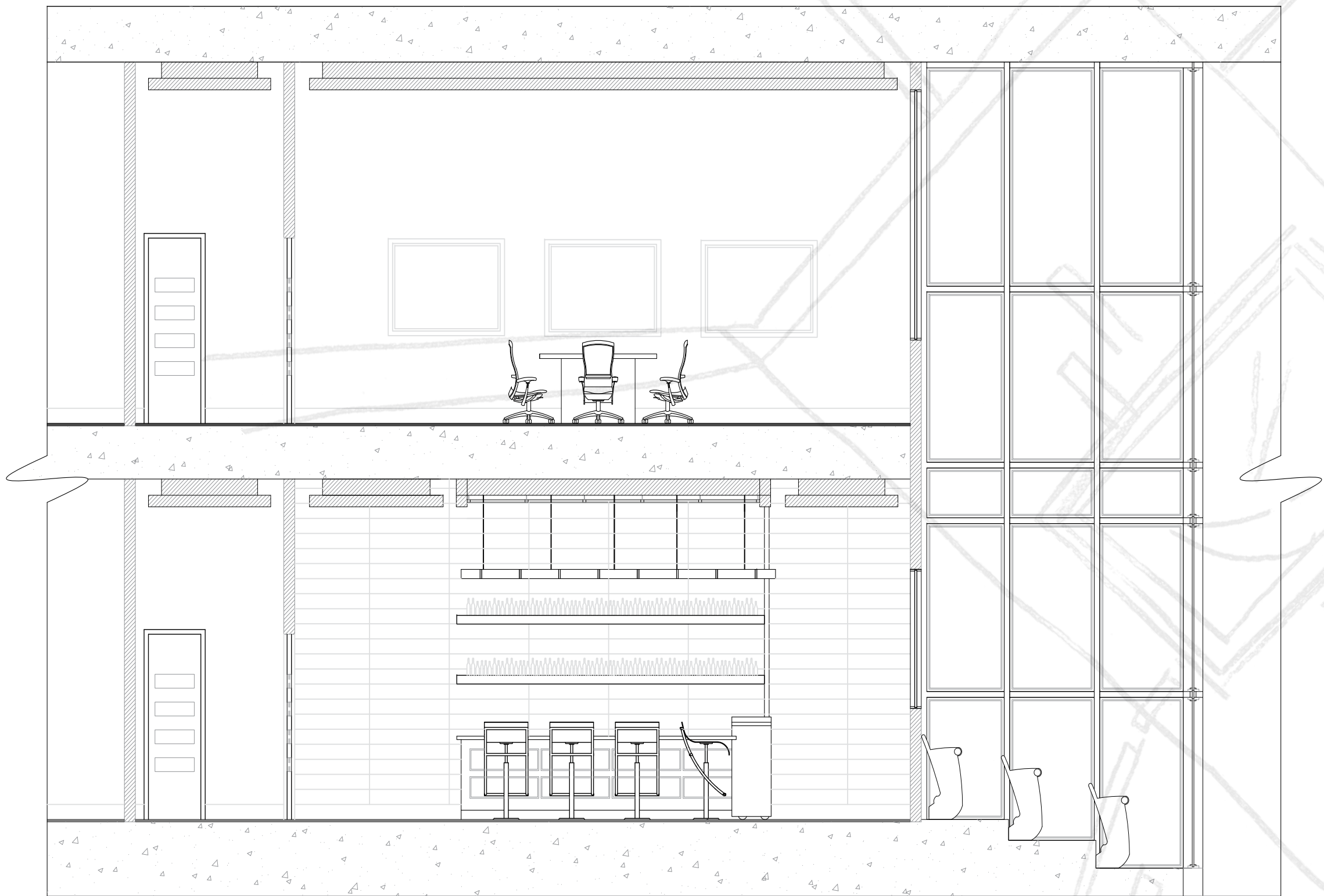
- Second Floor - Dimension Plan
- Second Floor - Furniture Plan
- Electrical Symbol Key





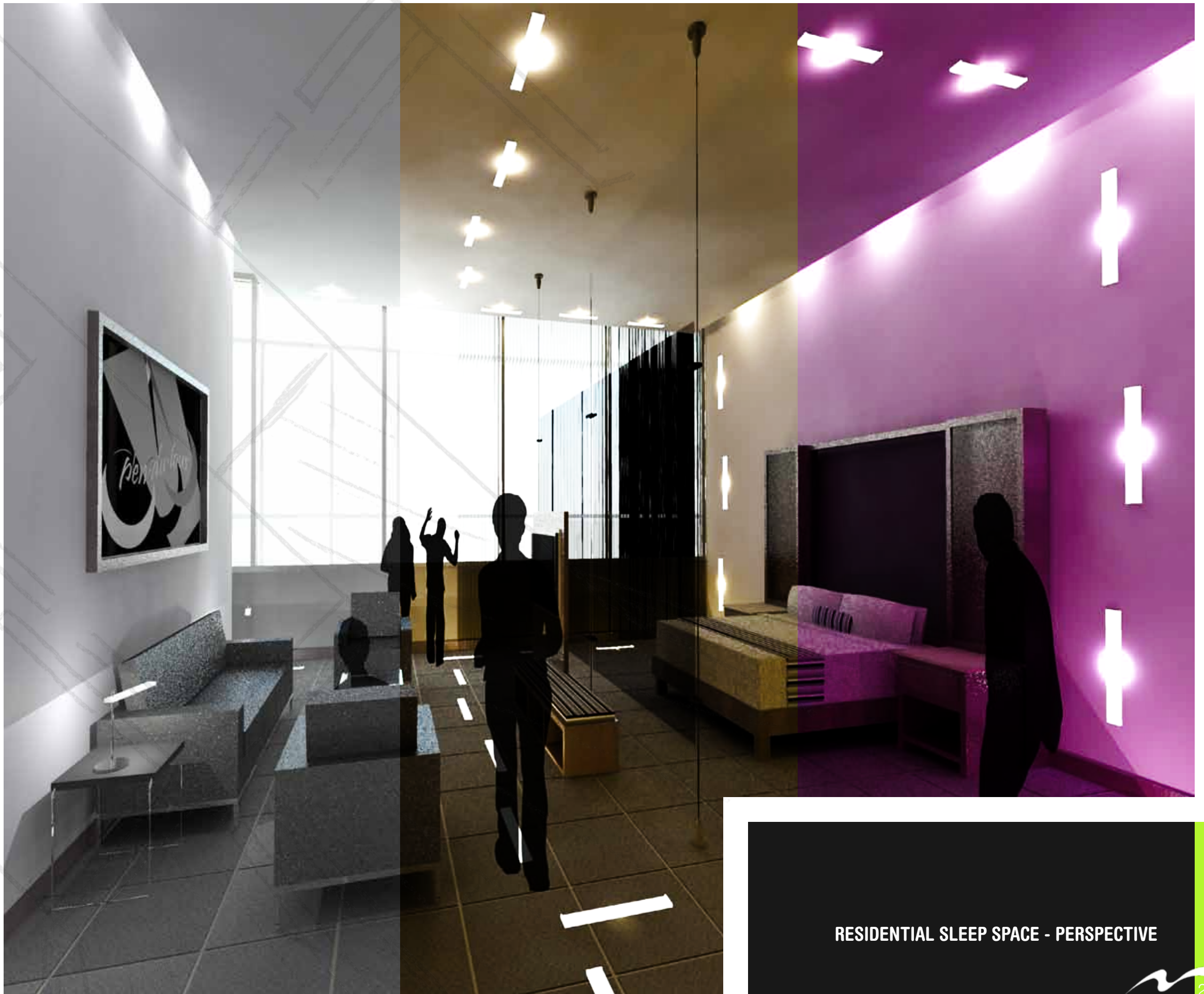
INTERACTIVE LIGHT WALL - SECTION

- Interactive Light Wall - Perspective



LATITUDINAL SECTION





RESIDENTIAL SLEEP SPACE - PERSPECTIVE